



BCP for SIP to ISUP mapping

draft-camarillo-mmusic-sip-isup-bcp-00.txt

Gonzalo Camarillo

Gonzalo.Camarillo@ericsson.com

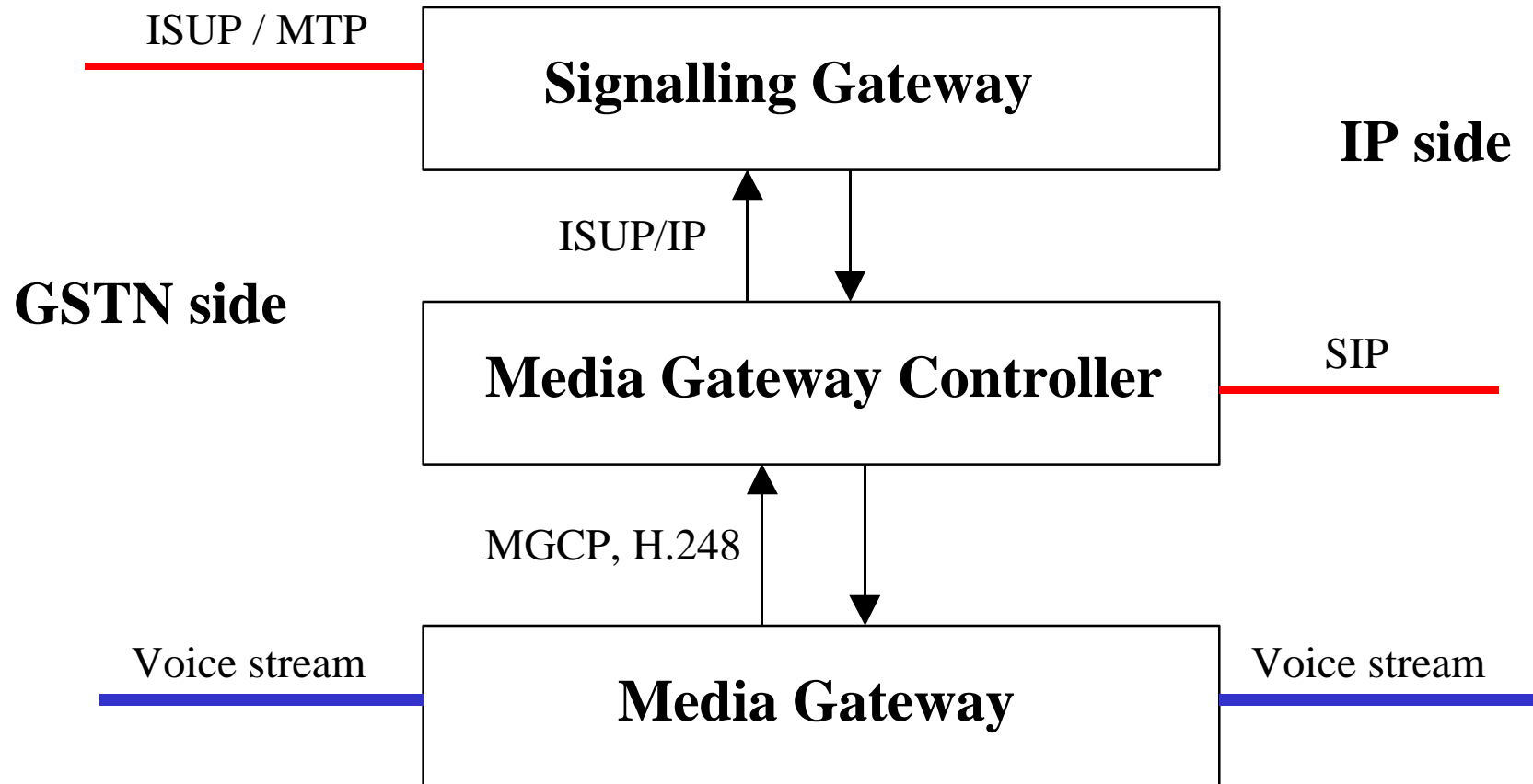
ASRL

Advanced Signalling Research Lab.

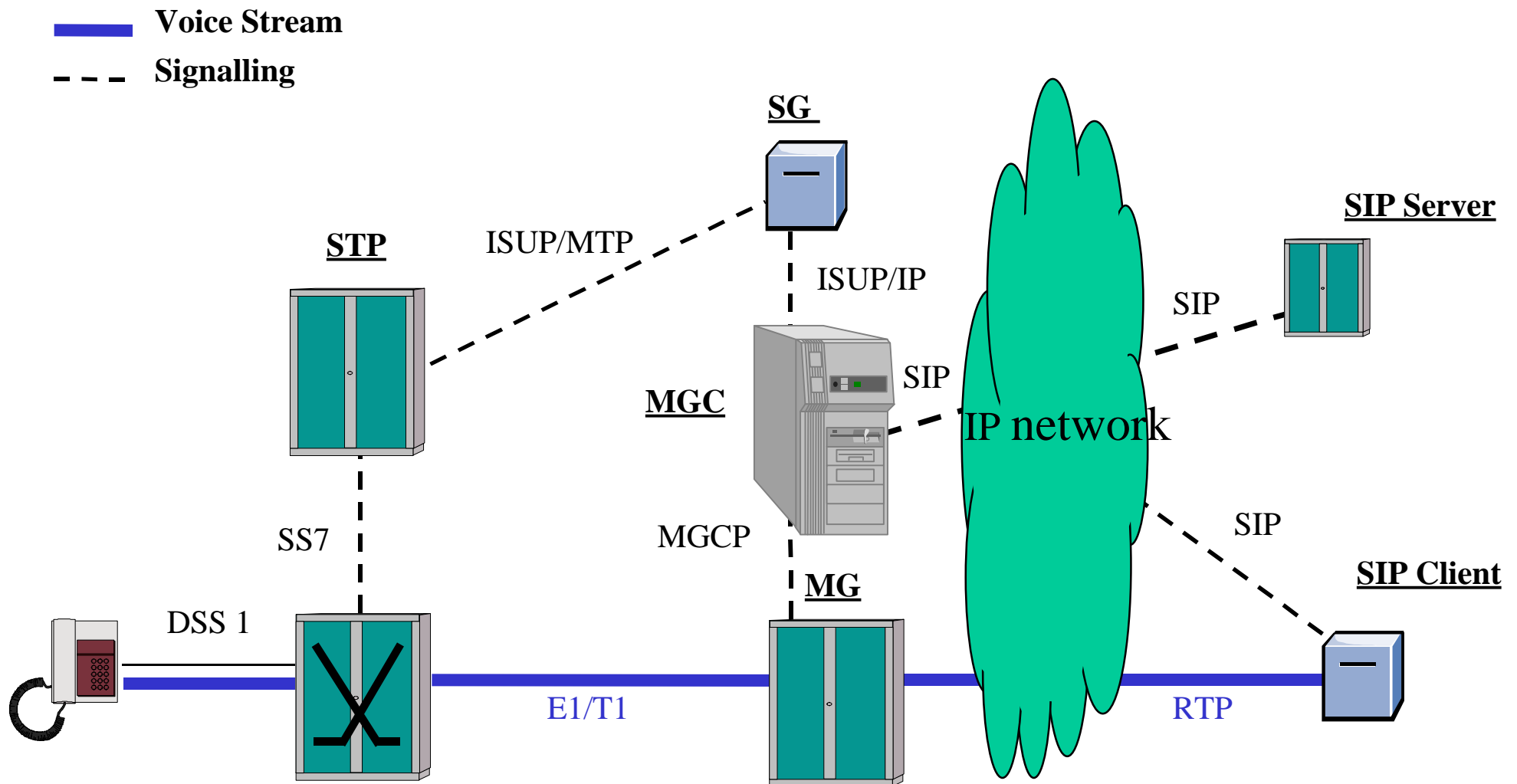
Outline

- Gateway architecture and scope of this draft
- ISUP - SIP interworking issues
- Standardization work to be done

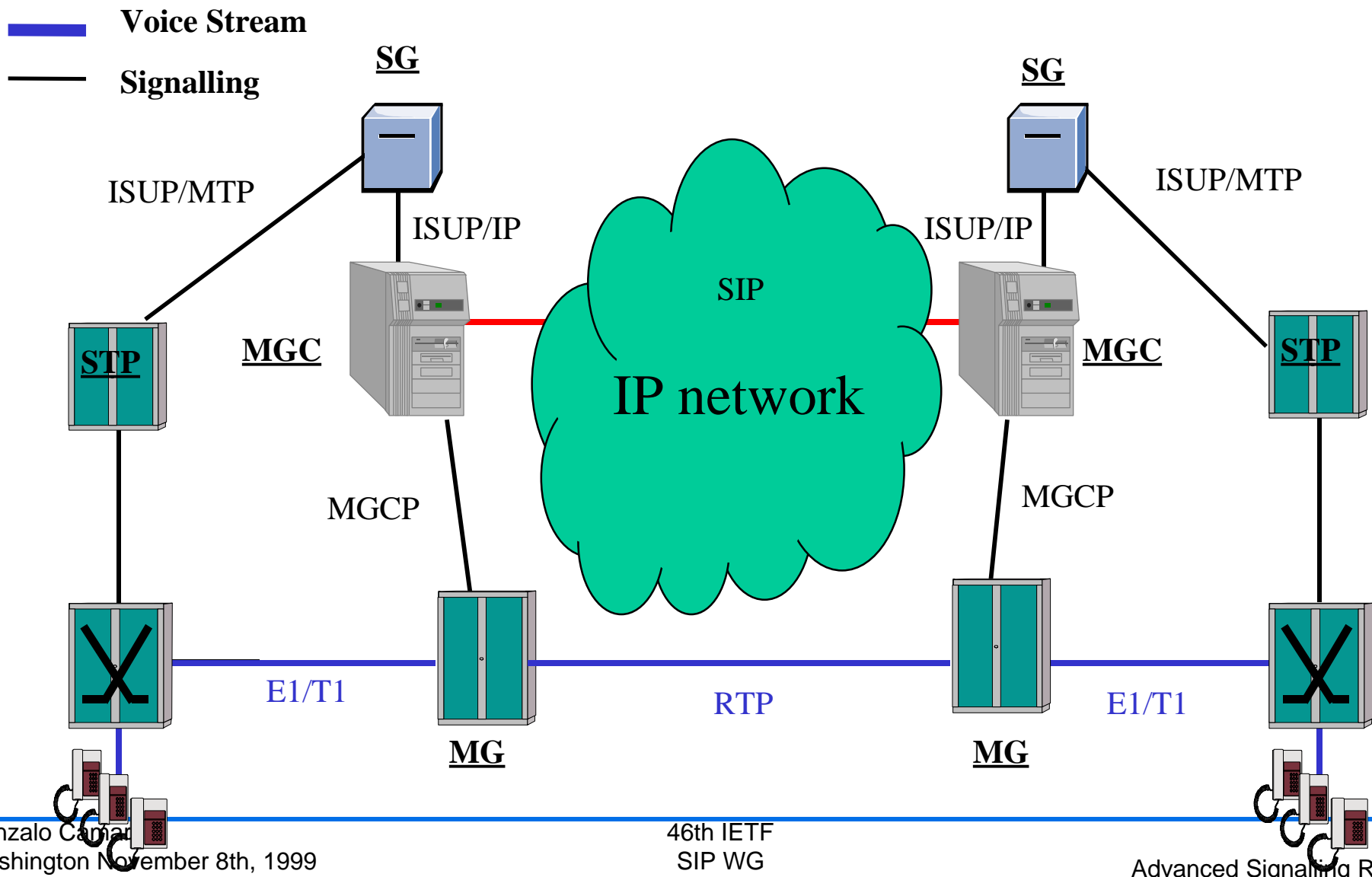
Architecture of the distributed gateway



SIP termination



SIP bridging



Media Gateway Controller for distributed Media Gateways

Functions

- Actual mapping between protocols (ISUP-SIP)
- Control the Media Gateway/s
- Authentication, Authorization and Accounting (AAA)

Contents of the draft

Message flow

- ISUP to SIP state machine
- SIP to ISUP state machine

Mapping of parameters

- SIP response codes to ISUP cause values
- ISUP cause values to SIP response codes
- Standard parameters in ISUP messages

This draft intends to provide

Consistent call flow between ISUP and SIP (not vendor dependent) for basic calls.

Consistent mapping between SIP response codes and ISUP cause values (not vendor dependent) for basic calls.

Consistent population of ISUP parameters.

What needs to be standardized

This draft uses ISUP Q.767 (Basic functionality). Mapping of more advanced ISUP features to SIP can be vendor specific.

This draft addresses just one problem. There are many other drafts needed to provide ISUP to SIP interworking.
Coordination to avoid “references” problems.

Requirements “by law” that SIP has to fulfil to substitute the PSTN as the main telephone network.